

Twin Female 1.5" Refueling Valve PF61FTM

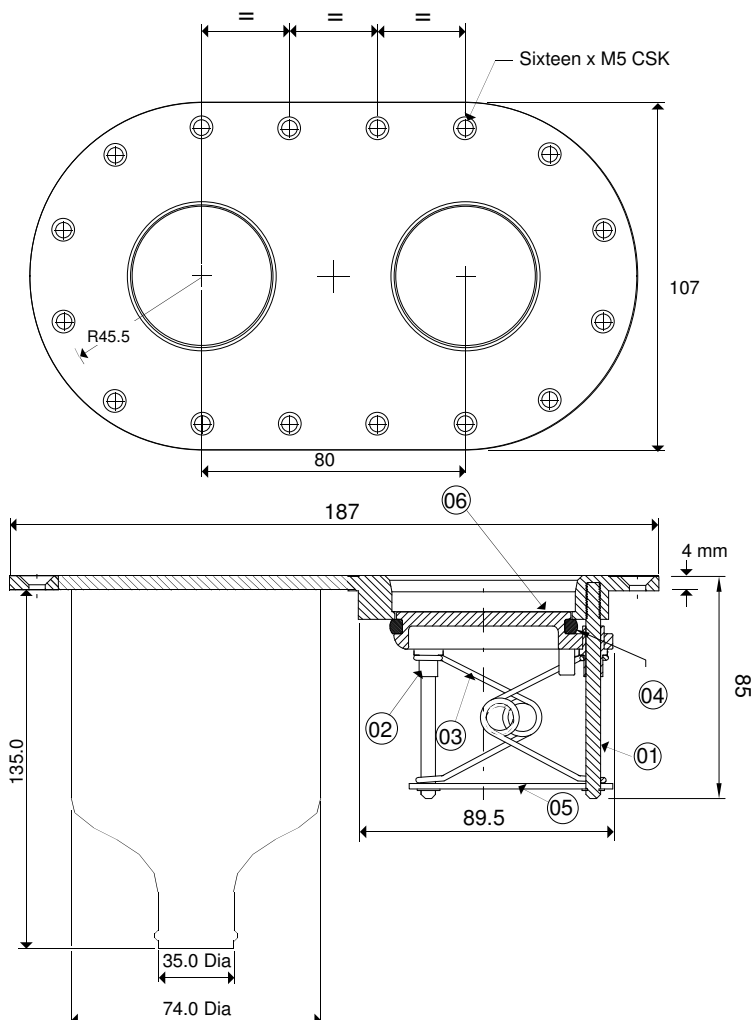
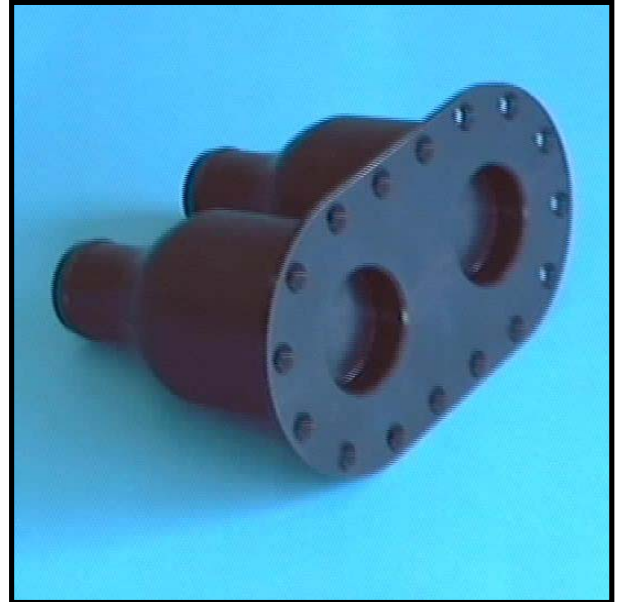
© **PREMIER**
FUEL SYSTEMS LTD

Reference Code: 0010RV

F. I. A. approved Appendix "J" 1.5" Twin Female Refueling Valve PF61FTM. To be used either for the refueling of Race Cars or Motorcycles.

The Twin Valve can be surface mounted directly on a fuel cell or remotely using the detachable 'screw on' Manifolds.

The Twin Valve is used in conjunction with two PF30M Male Refueling Valves (Reference Code 0001RV) and either a Twin Horizontal or Twin Vertical Handle (Reference Codes 0205RH and 0204RH respectively).



Replacement / Associated Parts

01. Leg	4201VL
02. Bush	4241VL
03. Leg Spring	4300SP
04. Viton Quad Ring	4050VS
05. Leg Spacer	4221VL
06. FTM Centre	4260VC
07. "Screw On" Manifold	0105RM

PFS 601Viton Gasket 2020VG

PFS 601Nutring 1020SN

PF30M Male
Refueling Valve 0001RV

Weight 900g