

FFC3 Locking Flush Fitting Filler Cap

© **PREMIER**
FUEL SYSTEMS LTD

Reference Code: 0050RV

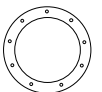
FFC3 Locking Flush Fitting Filler Cap. To be used in conjunction with PFS303 nutring (Reference Code 1013SN), and a PFS303 viton gasket (Reference Code 2013VG). To be mounted on the tank or remotely mounted using a 2" Dia Filler Funnel Manifold or 2.5" Dia Filler Funnel Manifold (Reference Codes 0121RM & 0122RM respectively).

The FFC3 is also interchangeable with a PP20FTM Female Refueling Valve.

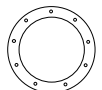


Replacement / Associated Parts

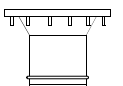
2013VG Gasket PFS303



1013SN Nutring PFS303

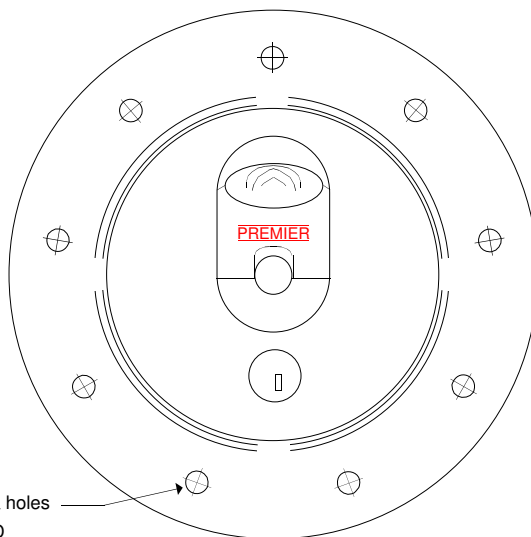


0121RM Filler Funnel 2"

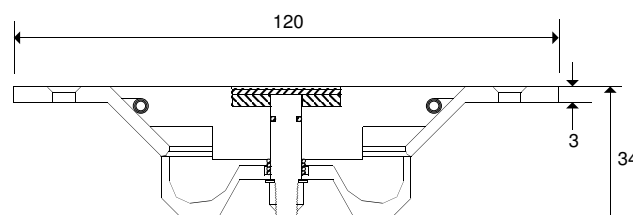


0122RM Filler Funnel 2.5"

0101RM Refueling Manifold 2"



Nine x 5.5 Dia holes
On 101.6 PCD



Weight 230g

Telephone No: ++44 (0) 1332 850515
Web Site: WWW.Premier-Fuel-Systems.com

Facsimile No: ++44 (0) 1332 850749
E-Mail: Info@Premier-Fuel-Systems.com